

Brood thermoregulation ~~efficiency~~effectiveness is positively linked to the amount of brood but not to the number of bees in honeybee colonies

5 Ugoline Godeau¹, Maryline Pioz¹, Olivier Martin², Charlotte Rüger³, Didier Crauser¹, Yves Le Conte¹, Mickael Henry¹, Cedric Alaux¹

¹ INRAE, Abeilles et Environnement, 84914 Avignon, France

² INRAE, Biostatistique et processus SPatiaux (BioSP), 84914 Avignon, France

10 ³ ANSES, Epidémiologie et appui à la surveillance (EAS), 69364 Lyon Cedex 07, France

Corresponding author:

Ugoline Godeau, godeau.ugoline@gmail.com

15 Abstract

To ensure the optimal development of brood, a honeybee colony needs to regulate its temperature within a certain range of values (thermoregulation), regardless of environmental changes in biotic and abiotic factors. While the set of behavioural and physiological responses implemented by honeybees to regulate the brood temperature has been well studied, less is known about the factors that may influence the efficiencyeffectiveness of this thermoregulation. Based on the response threshold model of task allocation, increased efficiencyeffectiveness of colony homeostasis should be driven by increases in group size. Therefore, we determined whether colony size (number of adult bees and amount of brood) positively influenced the efficiencyeffectiveness of brood thermoregulation that we measured via two criteria: (i) the brood temperature accuracy, via mean brood temperature, supposedly close to the optimum value for brood rearing, and (ii) the stability of the temperature around the mean value. Finally, within the applied perspective of honeybee colony monitoring, we assessed whether the efficiencyeffectiveness of thermoregulation could be used as a proxy of colony size.

For that purpose, we followed 29 honeybee colonies over two years, measured both brood and adult population size regularly over the beekeeping season, and monitored the brood temperature over the 24 hours preceding the inspections of these colonies. We then studied the effect of the size of the colony (number of adult bees and number of brood cells), as well as meteorological variables, on the efficiencyeffectiveness of thermoregulation (mean and stability of brood temperature).

35 We found a clear link between meteorological conditions and brood thermoregulation (mean temperature and its stability). Interestingly, mean brood temperature was also positively linked to

the ~~quantity~~amount of brood, while its stability did not seem influenced by the size of the colony (number of bees or brood ~~size~~amount). The relationship between brood ~~size~~amount and mean temperature was however too weak for clearly discriminating colony population size based solely on the brood thermoregulatory ~~efficiency~~-effectiveness. These results demonstrate an extremely high ~~efficiency~~effectiveness of honeybee colonies to thermoregulate the brood regardless of colony size.

Introduction

Homeostasis denotes the ability of living organisms to actively maintain steady internal conditions necessary for survival. A classic example of organismal homeostasis is the regulation of body temperature within certain boundaries, even when environmental temperatures change. Such a phenomenon is also found in social insects, like the honeybee *Apis mellifera*, for which the maintenance of nest conditions within a certain range of values (homeostasis), regardless of environmental changes in biotic and abiotic factors, is crucial for ~~their~~ colony development and survival (Schmickl & Crailsheim, 2004; Stabentheiner et al., 2021).

The maintenance of inner hive conditions is one of the most crucial functions of honeybee colonies. While adult bees are rather eurytherms (*i.e.* can live under a wide range of temperatures), with a minimum of 18°C for normal muscle function (Esch & Bastian, 1968) and a maximum for survival above 50°C (Coelho, 1991; Kovac et al., 2014), the brood is stenothermic (*i.e.* only able to survive and develop within a narrow temperature range) (~~Seeley, 1985~~); Seeley, 1985). Accurate temperature regulation is, therefore, essential for proper development, with brood temperature strictly controlled within a temperature range of 32 to 36°C (~~Seeley, 1985~~); Seeley, 1985) with

regulation even more precise during the pupal period ($35\pm 0.5^\circ\text{C}$, Jones et al. 2004; Kronenberg & Heller 1982; Stabentheiner et al. 2010, 2021). Maintaining this optimum temperature window is crucial for the colony. Indeed, extended deviations are known to increase mortality (Koeniger, 1978; Wang et al., 2016), cause morphological defects (~~Fukuda & Sakagami, 1968; Himmer, 1932; Winston, 1987~~)(Himmer, 1932; Fukuda & Sakagami, 1968; Winston, 1987), disrupt synaptic organization in the brain of adult bees (Groh et al., 2004) and affect behavioural performances (~~BecherTautz et al., 20092003~~; Jones et al., 2005; ~~TautzBecher et al., 20032009~~).

The colony, through the cooperation and coordination between individuals, therefore implements a set of behavioural and physiological responses to ensure proper temperature regulation of the hive (~~Jones & Oldroyd, 2006~~)(Jones & Oldroyd, 2006). When temperature is perceived as being too high, workers regulate it by fanning hot air out of the nest with their wings and may simultaneously spread water to induce evaporative cooling (Prange, 1996). At a finer scale, young workers can passively absorb heat by placing themselves between the heat source and the brood cells. This behaviour is called heat shielding, and it is usually carried out by placing the ventral side against the hot surface (~~Bonoan et al., 2014; Siegel et al., 2005; Starks et al., 2005; Starks & Gilley, 1999~~)(Starks & Gilley, 1999; Siegel et al., 2005; Starks et al., 2005; Bonoan et al., 2014). When temperature is perceived as being too low, workers can contract their thoracic muscles to produce heat (~~Esch et al., 1991; Heinrich, 1980, 1985, 1993; Heinrich & Esch, 1994~~). ~~Another efficient heating strategy consists of entering~~(Heinrich, 1980, 1985, 1993; Esch et al., 1991; Heinrich & Esch, 1994), and if necessary enter an empty cell to warm the adjacent cells containing brood (Bujok et al., 2002; Kleinhenz et al., 2003). Finally, during longer periods of cold, workers can cluster together and generate metabolic heat (Seeley & Heinrich, 1981; Kronenberg & Heller, 1982; Meikle et al., 2016; Seeley & Heinrich, 1981; Stabentheiner et al., 2010; Meikle et al., 2016).

The thermoregulatory mechanisms within the hive are therefore numerous, of different natures (behavioural, physiological or passive), flexible and interlaced, resulting in an effective brood temperature homeostasis (Kronenberg & Heller, 1982; Stabentheiner et al., 2021), even in extreme ambient conditions (*e.g.* Himmer, 1932 and Lindauer, 1955). However, temperature can fluctuate around its optimum value (Stabentheiner et al., 2021). Within the goal of maintaining temperature homeostasis, the efficiencyeffectiveness of thermoregulation can be gauged through two criteria: (i) mean brood temperature, supposedly close to the optimum value for brood rearing, and (ii) the stability of the temperature around this optimum value. Many studies have investigated how bees perform thermoregulation (see above), but little is known about the factors that can influence the efficiencyeffectiveness of this thermoregulation. Based on the response threshold model of task allocation (Beshers & Fewell, 2001), the probability that an individual bee will engage in thermoregulation will depend on the level of the task stimulus and her threshold for that stimulus, *i.e.* the likelihood of reacting to the task-associated stimuli. A greater between-individual variability and within-individual consistency (specialisation) in task performance is, therefore, expected to increase behavioural homeostasis within the colony (Ulrich et al., 2018). This was confirmed by an increased stability in temperature changes within colonies composed of genetically diverse worker bees as compared to colonies with a low level of genetic diversity (Jones et al., 2004). A more recent study showed in ants that increased colony behavioral homeostasis is also driven by increases in group size (number of adult ants), likely via a stabilization of task performance frequency and a decrease in task neglect (Ulrich et al., 2018). We could therefore expect a similar influence of colony size on thermoregulatory efficiencyeffectiveness in honeybees. A link between temperature regulation and the number of

honeybees has been suggested (Seeley & Heinrich 1981; e.g. Southwick, 1985), as well as the role
105 of the stimulus intensity (here brood amount), but this remains to be investigated and characterized.

We therefore investigated in this paper whether the thermoregulatory ~~efficiency~~effectiveness
around the brood (mean and stability of brood temperature) was related to colony size (number of
adult bees and brood amount). For that purpose, we monitored outside meteorological conditions,
inner hive temperature and bee population level of several colonies over two years. We then
110 investigated the influence of colony size on the thermoregulatory level (mean brood temperature)
and stability (fluctuations around the mean brood temperature). Finally, by using the relationship
between the thermoregulatory ~~efficiency~~effectiveness and colony size, we investigated whether
the ability to regulate temperature around the brood could be used to estimate the colony size (for
instance, whether high variability in thermoregulatory capacities could be an indicator of a
115 relatively weak colony, and vice versa), without needing more data such as climate data-, at least
under similar climatic conditions. Indeed, within the context of severe colony losses observed
around the world over the past years (Ellis et al., 2010; Neumann & Carreck, 2010; Potts et al.,
2010), there is a clear need for surveillance networks and beekeeping operations to identify simple
and non-intrusive proxies of colony state for monitoring and assessing their development and
120 potential decline (López-Uribe et al., 2020). Such proxies could be extremely useful given that
connected hives now allow us to monitor real-time data on physical variables such as weight,
temperature, humidity and respiratory gases (~~Marchal et al., 2020; Meikle & Holst, 2015; Zacepins~~
~~et al., 2011, 2012~~).(Zacepins et al., 2011, 2012; Meikle & Holst, 2015; Marchal et al., 2020).

Methods

125

I. Experimental setup and colony monitoring

Experiments were performed at INRAE (Avignon, France, 43°54'0N-4°-52'0E) with hybrid honeybee colonies (a mix of *Apis mellifera ligustica* and *Apis mellifera mellifera*). A total of 28 colonies, established in ten-frame wooden Dadant hives (1452 x L483 x H310 mm), were randomly selected from our local apiary in 2018 plus a new colony in 2019, for a total of 29 different colonies over the two years. Each colony was equipped with a temperature sensor (SHT35-DIS-B2.5KS, Sensirion AG) measuring in-hive temperature every 5 min. with a precision of 0.1°C within a temperature range of 20 to 60°C. The sensor ~~precision~~accuracy was verified and validated beforehand using a climatic chamber. Colony strength was found to be more related to temperature data from sensors nearest to the geometric centre of the hive (Cook et al., 2022). Therefore, the sensor was in-between two central frames and at mid-height, in order to be as close as possible to the brood, which generally occupy the central place in the hive.

The sensor was wired to a STM32 microcontroller (STMicroelectronics) and data were stored on a memory card (SanDisk Ultra SDHC 16 ~~Go~~GB).

Colonies were inspected six times in 2018 (*i.e.* every two to three weeks between July and October) and five times in 2019 (*i.e.* approximatively every three weeks between April and July) by using the ColEval method (Hernandez et al., 2020) and to estimate three parameters: the number of open and closed brood cells and the number of adult bees. During colony visits, each side of each frame was visually inspected and the area covered by each of these parameters was reported as a percentage (one full side = 100%). Considering that a full side of a Dadant Hoffmann frame has a surface of 11.34 dm² and contains in theory 1,400 bees and 4,000 brood cells under the hypothesis that every cell is filled with brood, percentages were ultimately converted into number of open

brood cells, number of closed brood cells, and number of adult bees inside the hive (Alaux et al., 2018; Hernandez et al., 2020). Initial population size was different for each colony, and ranged from 4,536 to 40,131 adult bees, 15,200 to 44,250 open and closed brood cells in July 2018, and
150 from 5,292 to 40,950 adult bees and 0 to 37,600 open and closed brood cells in April 2019 (Appendix S2 Figure S1, Appendix S3 Table S3).

II. Data analysis

1. Link between thermoregulatory ~~efficiency~~effectiveness, meteorological conditions and colony size

155 *Thermoregulatory variables*

In order to use temperature data reflecting brood temperature, we only kept temperature data from sensors that were surrounded by brood (containing brood on both adjacent sides of frames). Such information was retrieved from colony inspection (see above the ColEval method). We then calculated the mean of brood temperatures over the 24 hours preceding the day of colony
160 evaluation (hereafter MeanT – Appendix S2 Figure S2). We chose a 24-hour time period since brood population can rapidly evolve over days (e.g. adult emergence). We therefore minimized the risk of having brood population changes between the temperature and population monitoring. We then calculated the coefficient of variation (CV; *i.e.* standard deviation expressed as a percentage of MeanT) within this same 24-hour period, to obtain a dimensionless variable
165 representing the variation of temperature as a percentage of the mean temperature. In the end, we had a total of 236 observations (replicates) of each variable (colony population + temperature data) ~~for~~from the 29 colonies. The mean brood temperature in the dataset was 34.77°C (min = 33.00, Q1 = 34.62, Median = 34.82, Q3 = 34.96, max = 38.75), and exceeded 35.5°C in one case only

(38.75°C). The mean temperature coefficient of variation in the dataset was 0.74 (min = 0.21, Q1 = 0.50, Median = 0.68, Q3 = 0.87, max = 3.04). The final response variables were therefore (i) the mean temperature (MeanT), representing the ~~efficiency~~effectiveness to attain the optimum brood rearing temperature and (ii) the coefficient of variation of the in-hive temperature (CV), representing the thermoregulatory stability.

Predictor variables

Both colony size and environmental meteorological conditions can potentially influence the regulation of the in-hive temperature (Stabentheiner et al., 2021). Regarding colony size, we studied two predictor variables: (i) the number of adult bees (Nbees), and (ii) the total number of brood cells (Nbrood - as the sum of the number of capped and uncapped brood cells). Regarding meteorological conditions, we retrieved data from a local INRAE weather station, located ten meters away from the apiary, and investigated the three following variables as relevant indicators of environmental conditions: (i) the daily mean external temperature over the 24 hours preceding the day of colony evaluation (temperature mean TM, in degree Celsius), (ii) the daily global radiation (GR, in joule/cm², Burrill & Dietz 1981) and (iii) the daily precipitation (rainfall rate RR, in mm). In addition, to take into account a possible effect of phenological advancement of the colony, we have adapted the cumulative growing degree-day, usually used to estimate the growth and development of plants, to the foraging activity of bees, which largely contributes to colony development. The cumulative growing degree-day (GDDcum) was calculated as the sum of mean daily temperatures (TM) above 12.5°C, from the beginning of each year, *i.e.* 2018 and 2019 (Appendix S2 Figure S3). A temperature of 12.5°C corresponds to the minimum temperature at which honeybee foraging activity starts (Vicens & Bosch, 2000). For a given year the GDDcum was calculated as follows (where t=1 corresponds to the 1st of January):

$$GDDcum_t = \sum_{i=1}^t (\max(TM_i - 12.5, 0))$$

Finally, colony replicate was included as a random effect to take into account potential variation in thermoregulatory capacity inherent to the colony (such as colony genetics, Jones et al. 2004).

195 The various meteorological predictors (TM, GR, RR and GDDcum) were tested in addition to the strength of the colony (via Nbrood and Nbees variables) to explain the thermoregulatory ~~efficiency~~effectiveness criteria: the mean temperature around the brood (MeanT) and the variability of temperatures around the brood (CV). For the latter, we also integrated MeanT as a predictor to assess its potential influence on thermoregulatory stability.

200 *Statistical analysis and model selection*

We conducted a model-averaging analysis in order to study in detail the predictors explaining the variations of MeanT and CV and their contributions. For this purpose, we first used generalized linear mixed models to model the relationship between the two response temperature variables (MeanT and CV) and the predictors. For MeanT, we specified a Gaussian distribution and the Identity link function. For CV, since this variable was continuous and severely skewed, we 205 specified an inverse-Gaussian distribution with an Inverse link function. Because variables are measured in different units, we centred and scaled (by dividing by the standard deviation) the numerical variables when used as predictors (hereafter with an “S” at the end of their names). The two models are written as follows:

$$210 \quad g(\mu_{ij}) = \beta_0 + \sum_{h=1}^p \beta_h x_{hij} + \alpha_i$$

Where

μ_{ij} is the expectation of the variable Y_{ij}

y_{ij} is the j th observation of the i th colony (either MeanT or CV),

β_0 is the intercept,

215 β_h is the regression coefficient for the h th predictor,

x_{hij} is the j th value of the i th colony for the h th of p fixed-effect predictors,

α_i is the colony-specific effect and $\alpha_i \sim \text{Gaussian}(0, \sigma^2)$,

g is the link function (identity for the normal distribution and log for the inverse gaussian distribution).

220 We fitted the generalized linear models using the "glm" function (from the "stats" package - R Core Team 2021) for fixed effects models (without colony random effect), or the "glmer" function (from the "lme4" packages – Bates et al. 2015) for mixed models (with colony random effect).

225 ~~In order to avoid multicollinearity, which is highly problematic in the case of model averaging (Banner & Higgs, 2017; Cade, 2015), we have excluded the possibility for the models to integrate simultaneously variables that introduce multicollinearity (for multicollinearity detection method see Appendix S1).~~
In order to avoid multicollinearity, which is highly problematic in the case of model averaging (Cade, 2015; Banner & Higgs, 2017), we have excluded the possibility for the models to integrate simultaneously variables that introduce multicollinearity (for multicollinearity detection method see Appendix S1). In the end, the following pairs were not integrated into the
230 same model: NBeeS and NBroodS, GRS and TMS, and GDDcumS and MeanTS.

A model selection procedure was applied by using the corrected Akaike Information Criterion (AICc). This procedure was done with the dredge function in the “MuMIn” package (Bartoń,

2020). Finally, we conducted model averaging based on AICc, a multimodel inference approach that allows one to derive inference from a subset of closely related best models, and not just from a single best model. Regarding the choice of the subset, we included models with a ΔAICc of less than seven points from the best model, grouping models that are likely to be the best models and that should all be used when making further inferences ($\Delta\text{AICc} < 2$) and models that are unlikely to be best models but that should not be discounted ($\Delta\text{AICc} \in [4,7]$, Burnham & Anderson, 2002). Having previously forced some predictors not to be included in certain models, in order to avoid multicollinearities and a strong bias of underestimation of coefficients, we preferred the results of the conditional average. This model only averages over the models where the parameter appears, ignoring the cases where the model does not include the predictors when calculating the coefficients (unlike the full average for which the coefficients are set to 0.0 if the predictors are not included in the model). We did not consider any interaction between predictors because ~~we had no *a priori* biological reason for doing so, and~~ integrating these interactions, in particular with the random effects, was too ambitious in relation to the quantity of data available.

Based on the average models of MeanT and CV, for each predictor, we extracted its regression coefficient (to study effect size) and its P-value (to evaluate if its relationship with the studied variable is statistically significant). We also assessed the relative importance of each predictor by summing the Akaike weight across all the models in the set in which the predictor appeared. The closer the sum is to 1.0, the more important the predictor is in the set of fitted models (Burnham & Anderson, 2004).

2. Thermoregulatory ~~efficiency~~effectiveness across colony size categories

Within the applied perspective of honeybee colony monitoring and by using the same dataset, we tested whether data on thermoregulatory capacities on their own (*i.e.* without the climatic

information), could provide information on colony size. For that purpose, we transformed the two quantitative variables representing the strength of the colony (Nbees and Nbrood), into ordinal variables of four categories (respectively; catBees and catBrood) based on the quartiles (balanced in terms of number; Appendix S3 Table S3). Categories of catBees were distributed as follow:
260 cat1 = [1512 ; 13419], cat2 = [13420 ; 19152], cat3 = [19153 ; 25326], cat4 = [25327 ; 47880]. Categories of catBrood were distributed as follow: cat1 = [0 ; 13800], cat2 = [13801 ; 20400], cat3 = [20401 ; 25326], cat4 = [27226 ; 46250]. We then assessed whether colony size categories were associated with specific in-hive temperature variables (MeanT and CV) by comparing the latter across the different categories representing the strength of the colony. Since the goal was to
265 estimate colony size remotely and in that case it is not possible to know whether there is brood around the sensor, we selected MeanT (and corresponding CV) within the brood temperature range of 32-36°C. MeanT and CV data were not normally distributed (neither globally nor by categories), we applied the nonparametric test of Kruskal-Wallis to test whether the medians of the thermoregulatory variables (MeanT or CV) differ across colony-size categories. We also looked
270 at the effect size of this Kruskal-Wallis test (as being the *eta* squared based on the H-statistic, with $\epsilon^2 < 0.01$: very small effect, $0.01 < \epsilon^2 < 0.08$: small effect, $0.08 < \epsilon^2 < 0.26$: medium effect and $\epsilon^2 \geq 0.26$: large effect, Cohen, 1988). In the case of significant results ($P < 0.05$), we applied a Dunn post-hoc test to investigate multiple pairwise comparisons. These tests were carried out using the package “rstatix” (Kassambara, 2021).

275 Finally, we conducted ordinal logistic regression (with “clm” function from the “ordinal” package - Christensen 2019) in order to try to predict colony-size category (amount of brood ~~or number of bees~~) based on the mean brood temperature data. We compared predictions of the models with the real observations and extracted accuracy (the proportion of all correctly classified validation

points) and Cohen's Kappa statistics ($\kappa = (\text{Observed Accuracy} - \text{Expected Accuracy}) / (1 - \text{Expected Accuracy})$), which evaluate classification performance, taking into account the possibility of the agreement occurring by chance.

Results

I. Link between the mean temperature around the brood, colony size and meteorological conditions

After setting aside models prone to multicollinearity, a total of eight models remained (Appendix S3 Table S2) from which the average model was estimated (Appendix S3 Table S3). The combined outputs of the average model suggest that MeanT deviance was better explained by the scaled total number of brood cells (NbroodS), the scaled cumulative growing degree-day (GDDcumS), the scaled precipitation levels (RRS), the scaled global radiation (GRS), the scaled mean external temperature (TMS), and a colony random effect. NbroodS had a significant positive effect on MeanT, contrary to GDDcumS and RRS that had a significant negative effect on MeanT (Figure 1). GRS and TMS had no significant effect on MeanT (Figure 1). When looking at the sum of Akaike weights (Figure 1), NBroodS, GDDcumS and RRS had high relative importance. The colony random effect had a low sum of weights (sum of weights = 0.05). The model was not very efficient in predicting the observed data, with weak MeanT strongly overestimated and strong MeanT heavily underestimated (Figure 2).

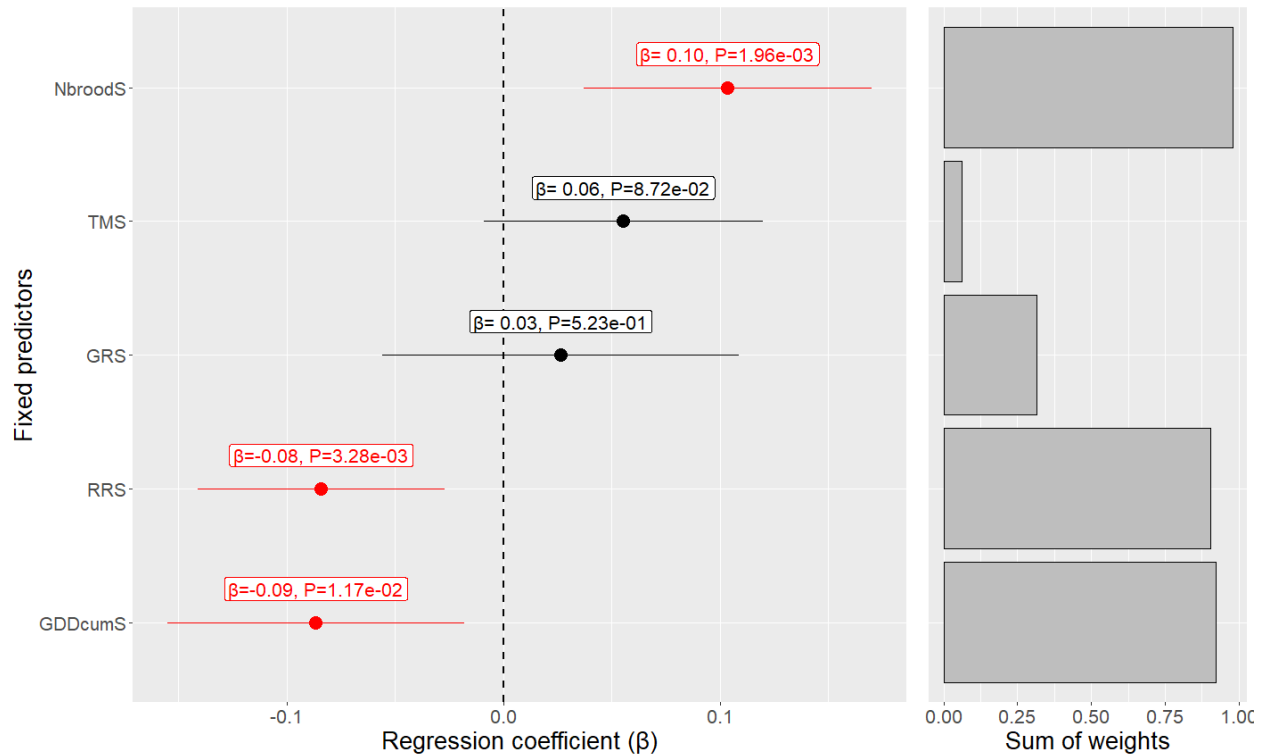


Figure 1: Left: Predictor estimates (β), and P-values (P) of fixed-effect parameters for the in-hive
 300 mean temperature (MeanT) average model. Bars represent the 95% confidence intervals of
 predictor estimates. Red points and bars are for predictors with significant effect at a level of 5%.
 Right: Sum of weights across all models in the set where the variable occurred. NbroodS = Scaled
 the number of adult bees, TMS = Scaled daily mean external temperature, GRS = scaled daily
 global radiation, RRS = scaled daily precipitation, GDDcumS = scaled cumulative growing
 305 degree-day.

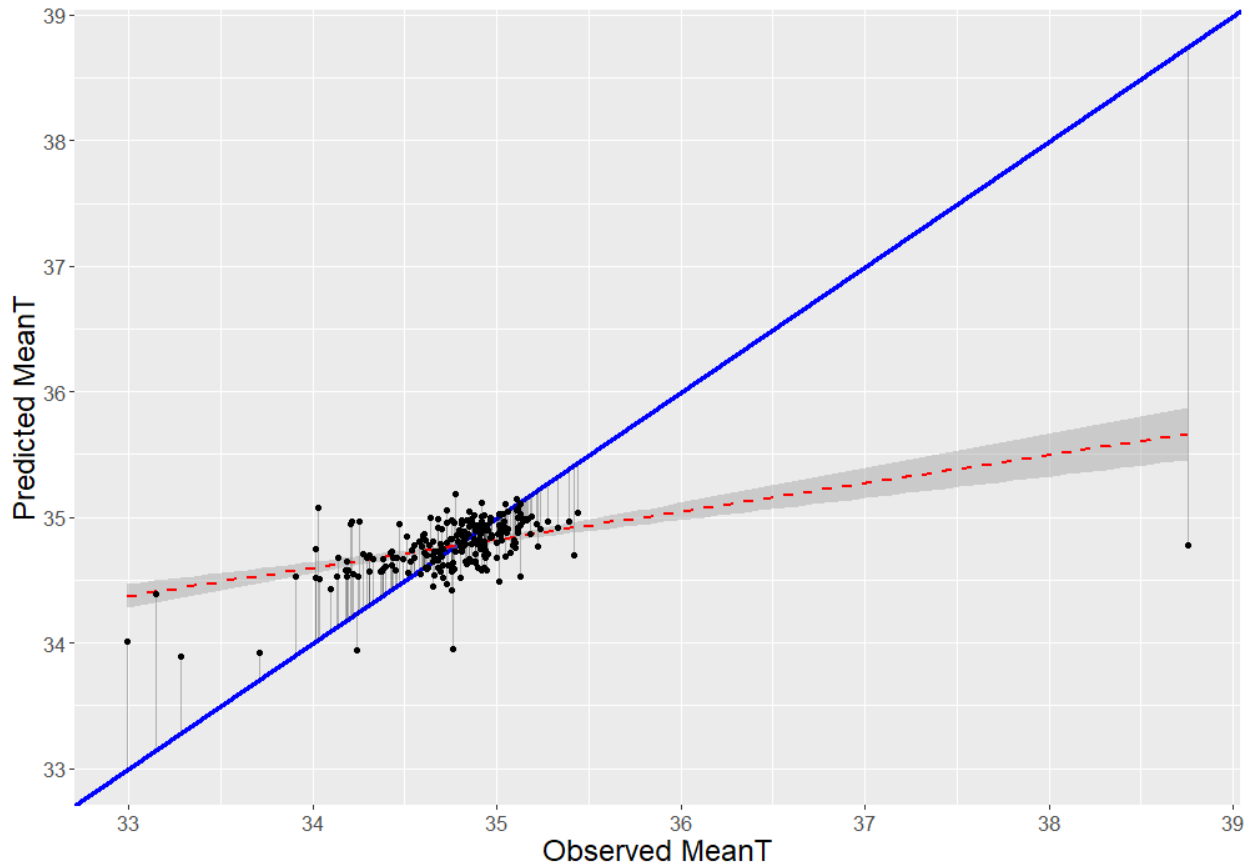


Figure 2: Mean in-hive temperature (MeanT) predicted by the average model as a function of the observed MeanT, with first bisector in blue ($\text{Predicted MeanT} = \text{Observed MeanT}$), deviations from this line in grey and regression line of the point cloud as a dotted red line.

310 **II. Link between the variability of the temperature around the brood, colony size and meteorological conditions**

After setting aside models prone to multicollinearity, a total of 18 models remained (Appendix S3 Table S4) from which the average model was estimated (Appendix S3 Table S5). The combined outputs of the average model suggest that CV deviance was better explained by the scaled mean
 315 in-hive temperature (MeanTS), the scaled precipitation levels (RRS), the scaled external mean temperature (TMS), the scaled number of adult bees (NBeesS), the scaled total number of brood

cells (NbroodS), the scaled cumulative growing degree-day (GDDcumS), and a colony random effect. All models composing the average model included the colony random effect, which had a significant effect on CV. TMS had a significant positive effect on CV (Figure 3). All other predictors (NbroodS, RRS, NBeeS, GDDcumS and MeanTS) had no significant effect on CV (Figure 3). When looking at the sum of Akaike weights (Figure 2), TMS and, to a lesser extent, RRS and NbroodS had high relative importance. The colony random effect also had a very high relative importance based on sum of weights (sum of weights = 1.0). The model was again not very efficient in predicting the observed data, with weak CVs slightly overestimated and the few strong CVs heavily underestimated, meaning that the model better explains weak CVs than strong CVs (Figure 4).

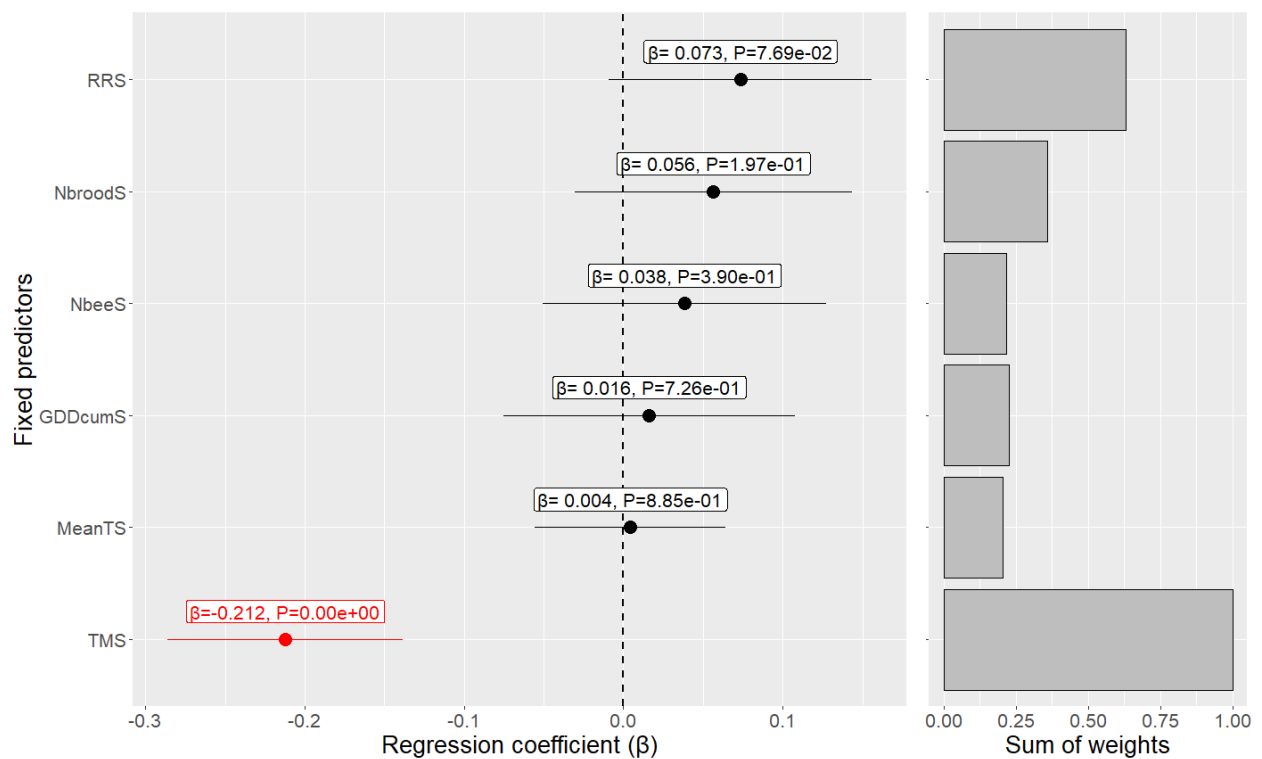
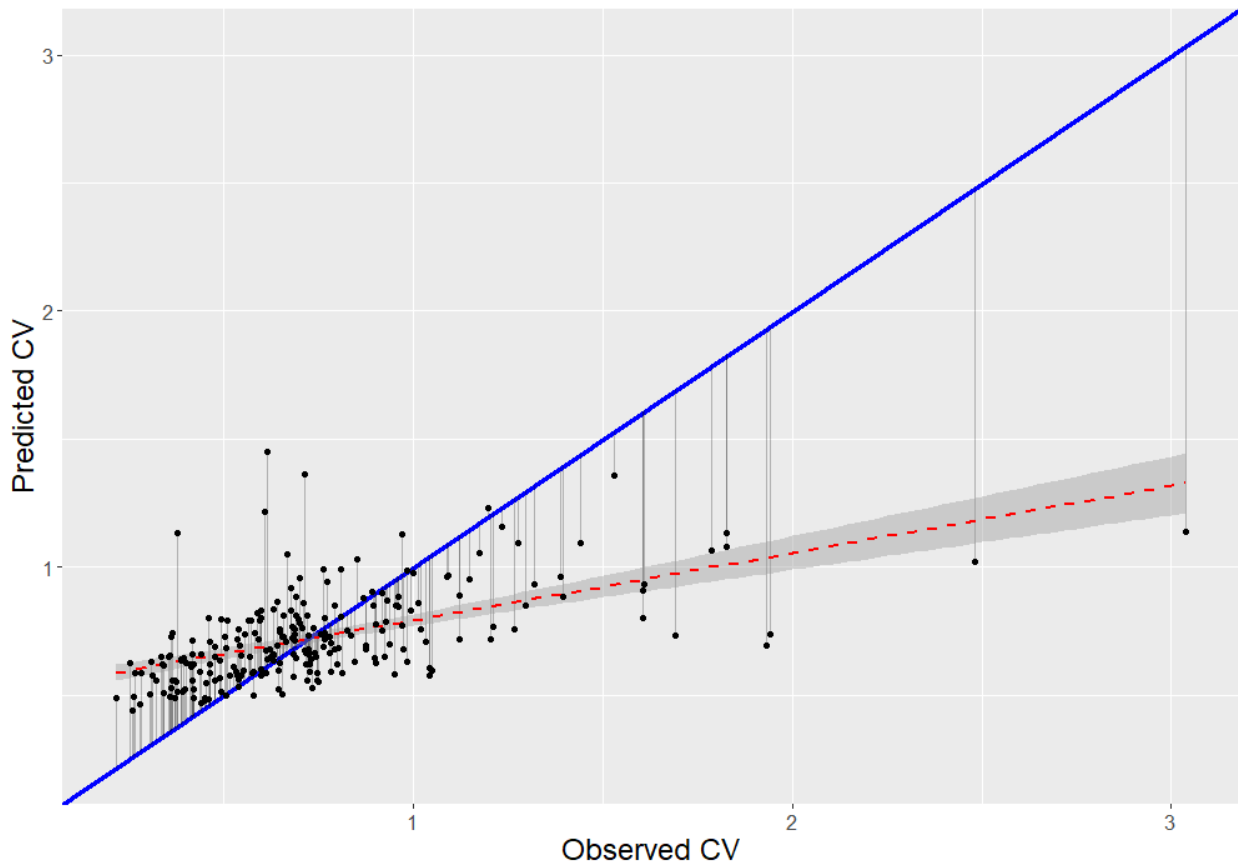


Figure 3: Left: Predictor estimates (β), and P-values (P) of fixed-effect parameters for the in-hive temperature CV average model. Bars represent the 95% confidence intervals of predictor

330 estimates. Red points and bars are for predictors with significant effect at a level of 5%. Right:
Sum of weights across all models in the set where the variable occurred. NbroodS = Scaled the
number of adult bees, TMS = Scaled daily mean external temperature, GRS = scaled daily global
radiation, RRS = scaled daily precipitation, GDDcumS = scaled cumulative growing degree-day,
MeanTS = scaled mean brood temperature.



335

Figure 4: Coefficient of variation of in-hive temperature (CV) predicted by the average model as a function of the observed CV, with first bisector in blue ($\text{Predicted CV} = \text{Observed CV}$), deviations from this line in grey and regression line of the point cloud as a dotted red line.

III. Link between thermoregulatory ~~efficiency~~ effectiveness and categorized colony sizes

340

345

350

We then assessed whether thermoregulatory ~~efficiency~~ effectiveness (MeanT and its stability CV) differed between colony size categories (based on quartiles of brood amount: catBrood and of bee number: catBees, Figure 5). We found significant variations across colony size categories with moderate magnitude for both MeanT (catBrood: P-value < 0.001, $\epsilon^2 = 0.239$ and catBees: P-value = 0.00223, $\epsilon^2 = 0.0499$, Kruskal-Wallis tests) and CV (catBrood only: P-value = 0.0329, $\epsilon^2 = 0.0248$). The MeanT was significantly higher in the ~~largest size~~ colonies (~~cat3~~with larger number of adult bees (catBees3 and cat4catBees4) as compared to the smallest colonies (cat1) (for both catBees and catBrood).with few bees (catBees1). Significant differences in the MeanT were also observed between catBrood1 and all other categories (catBrood2; to catBrood4), as well as between catBrood2 and ~~catBrood 4~~catBrood4. However, CV values did not differ across colony size categories, both in terms of number of bees and brood amount (excepted between catBees2 and catBees4).

355

The effect of Nbrood or Nbees on the ~~precision~~mean temperature (meanT) or stability (CV) of thermoregulation was not distinct enough to clearly discriminate different potential colony sizes. We can only notice that a low temperature (MeanT $\approx 34.4^\circ\text{C}$) was somewhat associated with a weak colony in terms of ~~quantity~~amount of brood (catBrood cat1 $\leq 13,800$ brood cells, cf. Appendix S3 Table S7). The analysis of the density plot (Appendix S2 Figure S4) showed that, below a MeanT of 34.5°C , colonies were unlikely to belong to the third and ~~fourth~~categoriesfourth

categories of NBrood. Regarding the CV, we did not observe any clear discrimination of categories (NBrood and NBees, Figure 5 and Appendix S2 Figure S4).

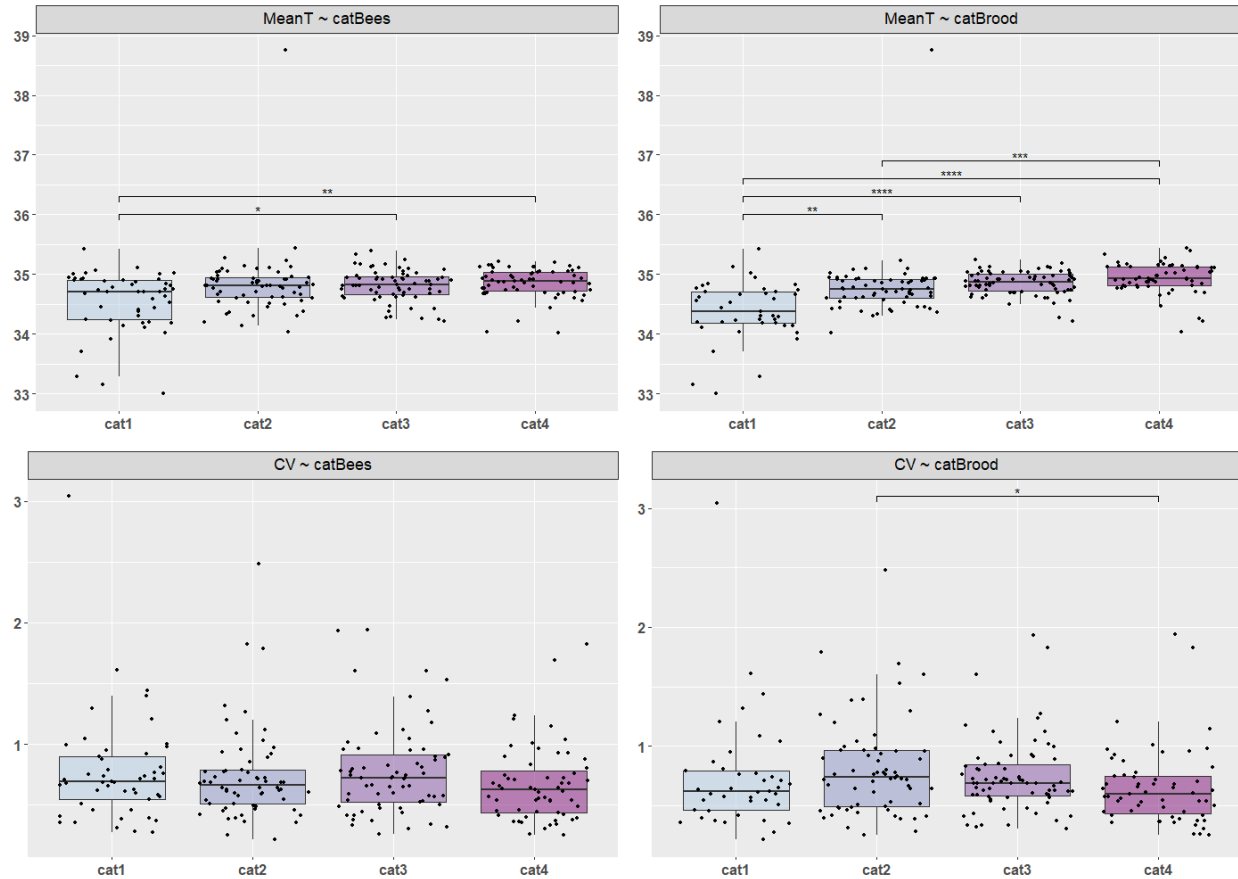


Figure 5: Thermoregulatory efficiencyeffectiveness (MeanT and CV) across categories of number of adult bees (catBees) and brood cells (catBrood). ns: not significant, stars indicate significant differences between colony categories (post-hoc Dunn test). **** P-value < 0.001, *** P-value < 0.005, ** P-value < 0.01, * P-value < 0.05. For category ranges see Methods and Appendix S3 Table S1.

Finally, the ordinal logistic regression showed that Nbrood categories (catBrood) was significantly correlated to associated with mean brood temperature (MeanTS P-value = 3.62e-11). However, the

370 model predictions were not correct enough to make predictions (accuracy = 0.4492, κ = 0.246;
Table 1).

Table 1 : Confusion table for ordinal logistic models predicting catBrood based on MeanT. Grey highlights indicate true positives. For category ranges see Methods and Appendix S3 Table S1.

	catBrood1 predicted	catBrood2 predicted	catBrood3 predicted	catBrood4 predicted
catBrood1 observed	20	12	6	3
catBrood2 observed	2	27	29	6
catBrood3 observed	2	19	35	16
catBrood4 observed	3	6	26	24

375

Discussion

I. Link between the mean temperature around the brood and colony size

In order for the brood to develop normally, honeybee colonies need to regulate the brood temperature between 32°C and 36°C, and optimally at 35°C (Seeley, 1985). (Seeley, 1985). Brood temperature is therefore regulated within a narrow range of temperatures but according to the response threshold model of division of labour, we still expected that an increase in group size would generate a higher level of social homeostasis and therefore increased capacity of reaching optimal nest conditions, due to higher variability and task specialization between individuals (Ulrich et al., 2018). ~~We did not find that mean brood temperature significantly increases with the number of adult bees within colonies. However~~ On one hand, we found no effect of the number of bees with the GLM on raw data, however, when the data was categorized, there was a significant

385

difference between the smallest category (catBees1) and the two largest categories (catBees3 and catBees4). These differences were probably due to the fact that colonies with few bees (catBees1) were the only colonies with low temperature values (below 34.0°C). On the other hand, mean
390 temperature was significantly and positively related to the amount of brood. Social homeostasis, and thus the ability to thermoregulate, depends on the likelihood of individuals to react to a stimulus, which should increase with the intensity of the stimulus (exceeding the response threshold of more individuals) (Theraulaz et al., 1998). Under this last scenario, it is possible that the stimulus intensity of the thermoregulatory tasks (brood amount) was high enough to surpass
395 the threshold response of many individual bees, regardless of their respective thresholds. A non-mutually exclusive hypothesis is that the greater the quantityamount of brood, the greater the chance there is that the sensor is well surrounded by brood, and therefore to record optimal temperatures. However, we expected this effect to be reduced since we selected temperatures from sensors that were surrounded by brood (containing brood on both adjacent sides of frames), and
400 we therefore minimized situations in which the temperature sensor would be located at the periphery of the brood patch where the brood temperature would be lower.

II. Link between the variability of the temperature around the brood and colony size

We expected that an increase in group size would allow honeybee colony responses to better buffer against environmental fluctuation and therefore regulate hive temperature. However, the
405 variability of brood temperature was neither linked to the mean temperature around which this variability was calculated nor to the colony size (number of adult bees or amount of brood). This suggests that a decrease in group size does not particularly constitute an element of loss of effieieneyeffectiveness in brood thermoregulation. Bee colonies, regardless of their size, seem to

have high abilities to keep a stable brood temperature. This phenomenon could be attributed in
410 social insects to differences among individuals (Ulrich et al., 2018). Inter-individual behavioural
variation was notably found to favour the collective control of nest climate in bumblebees (*Bombus
terrestris*, Weidenmüller 2004). However, we found important inter-colony variation (with colony
random effect of weight 1.0) in the ability of keeping brood temperature stable. These differences
among colonies could be linked to various underlying reasons, for example, the exact location of
415 the hive (more or less shaded) or the genetics of the bees ([Jones et al., 2004](#); Graham et al., 2006;
[Jones et al., 2004](#)).

III. Link between thermoregulatory ~~efficiency~~effectiveness and environmental conditions

This ~~efficiency~~effectiveness of thermoregulation also depends on environmental conditions. The
420 effect of the environmental temperature on the hive temperature has been highlighted previously.
Stabentheiner et al. (2010) notably showed that the environmental temperatures have a non-
negligible impact on the temperature regulation capacity inside the hive, in particular at the level
of the brood. We also highlighted an influence of these environmental conditions on the regulation
of brood temperature.

425 The cumulative growing degree-day, which represents the quantity of foraging days, and so gives
an indication of phenological advancement of the colony, was negatively associated with the mean
brood temperature: the further we advanced in the beekeeping season, the lower the brood
temperature was. Such an association could be explained by the link between brood temperature
and brood ~~size~~amount, which declined between the spring and fall.

430 More interestingly, the external temperature had a high non-negligible influence on colony's ability to maintain a stable brood temperature. Indeed, the hotter the environmental temperature, the more difficult it was for the colony to stabilise the brood temperature: [\(Figure S5\)](#). This might be explained by the mechanisms used by colonies to compensate for high environmental temperatures, which consist of the collection and evaporation of water above the brood. Notably, 435 in response to a simulated heat wave at 37°C (2°C above the optimal temperature), a 70% increase in forager traffic to sustain water needs was previously observed (Bordier et al., 2017). However, the efficacy of water collection not only depends on the foraging capacity but also on water availability in the environment (distance from the hive, water amount), which might lead to some degree of fluctuation in the regulation of brood temperature as compared to the more “passive” 440 response to cold (changes in bee density and endothermy). [This might especially hold in our experimental site characterized by high summer temperatures \(between 35 and 40°C\), although water from a river and irrigation gutters was accessible to bees available in less than 1 km away.](#) In the context of climate change, where a general increase in temperatures is observed, this lower [efficiencyeffectiveness](#) of colonies in maintaining optimal conditions for brood rearing may add 445 another level of stress for honeybees and represent a cause of concerns for beekeeping activities.

IV. From thermoregulatory data to colony size evaluation

Measurements of in-hive temperatures have already been suggested and used for monitoring honeybee colony populations. It was notably found that the adult and brood mass of colonies were positively correlated with the in-hive temperatures [\(Cook et al., 2022; Meikle et al., 2016, 2017\)](#); [\(Meikle et al., 2016, 2017; Cook et al., 2022\)](#). Similarly, brood mass (but not adult mass) 450 was inversely related to the amplitude of in-hive temperatures (Meikle et al., 2017). These results

were obtained by including all in-hive temperatures (no pre-selection of brood temperatures). As a consequence, strict control of temperatures (low temperature variation) was indicative of colonies with brood and large temperature amplitudes were indicative of colonies with little or no brood (Meikle et al., 2017). The fact that we obtained similar results but on brood thermoregulation (i.e. link between mean brood temperature and brood amount) is promising within the goal of estimating colony population size. In-hive temperatures could be used as a first filter to discriminate colonies with brood from colonies with little or no brood. Then, analysis of brood thermoregulatory ~~efficiency~~effectiveness could be used in a second step to evaluate in more detail the state of colonies with a relatively high amount of brood. The greater the brood temperature, the more the colony would have brood (as indicated by our results). By splitting colonies into size categories, we effectively found that colonies with a large amount of brood had significantly higher brood temperature than small colonies. However, when looking at the boxplot and density plot of colony size categories according to their thermoregulatory levels (Figure 5, Appendix S2 Figure S4), it was only possible to state that a temperature below 34.5°C was not indicative of large colonies in our dataset (colonies with more than 20,401 brood cells were unlikely). While in-hive temperatures can easily discriminate colonies with brood from colonies with almost no brood, a higher level of colony-size discrimination was not possible when focusing on brood temperatures.

V. Conclusion

Brood thermoregulatory ~~efficiency~~effectiveness, more specifically increasing brood temperature, was associated with brood ~~size~~amount. On the other hand, the size of the brood did not seem to influence the stability of this temperature. Similarly, the number of bees in the colony was not associated with an increase in thermoregulation ~~efficiency~~effectiveness (mean temperature or its

stability). These results certainly highlight a role of the amount of brood on its thermoregulation, but above all they highlight the very high efficiencyeffectiveness of colonies to thermoregulate regardless of their size.

475

480

As a consequence, the discrimination of colony population level based on brood thermoregulatory data was rather difficult. Nevertheless, within the applied perspective of honeybee colony monitoring, it would be useful to analyse a larger range of colony size variation, including depopulated or collapsing colonies, to fully conclude on the potential of brood temperature as a proxy for colony size estimation.

References

485

Alaux, C., Soubeyrand, S., Prado, A., Peruzzi, M., Maisonnasse, A., Vallon, J., Hernandez, J., Jourdan, P., & Conte, Y. L. (2018). Measuring biological age to assess colony demographics in honeybees. *PLOS ONE*, *13*(12), e0209192. <https://doi.org/10.1371/journal.pone.0209192>

Banner, K. M., & Higgs, M. D. (2017). Considerations for assessing model averaging of regression coefficients. *Ecological Applications*, *27*(1), 78-93. <https://doi.org/10.1002/eap.1419>

490

Bartoń, K. (2020). *MuMIn : Multi-Model Inference*. R package version 1.43.17. <https://CRAN.R-project.org/package=MuMIn>

Bates, D., Mächler, M., Bolker, B., & Walker, S. (2015). Fitting Linear Mixed-Effects Models Using lme4. *Journal of Statistical Software*, *67*, 1-48. <https://doi.org/10.18637/jss.v067.i01>

- 495 Becher, M. A., Scharpenberg, H., & Moritz, R. F. A. (2009). Pupal developmental temperature and behavioral specialization of honeybee workers (*Apis mellifera* L.). *Journal of Comparative Physiology A*, *195*(7), 673-679. <https://doi.org/10.1007/s00359-009-0442-7>
- Beshers, S. N., & Fewell, J. H. (2001). Models of Division of Labor in Social Insects. *Annual Review of Entomology*, *46*(1), 413-440. <https://doi.org/10.1146/annurev.ento.46.1.413>
- 500 Bonoan, R. E., Goldman, R. R., Wong, P. Y., & Starks, P. T. (2014). Vasculature of the hive : Heat dissipation in the honey bee (*Apis mellifera*) hive. *Naturwissenschaften*, *101*(6), 459-465. <https://doi.org/10.1007/s00114-014-1174-2>
- Bordier, C., Dechatre, H., Suchail, S., Peruzzi, M., Soubeyrand, S., Pioz, M., Péliissier, M., Crauser, D., Conte, Y. L., & Alaux, C. (2017). Colony adaptive response to simulated heat waves and consequences at the individual level in honeybees (*Apis mellifera*). *Scientific Reports*, *7*(1), 3760. <https://doi.org/10.1038/s41598-017-03944-x>
- 505 Bujok, B., Kleinhenz, M., Fuchs, S., & Tautz, J. (2002). Hot spots in the bee hive. *Naturwissenschaften*, *89*(7), 299-301. <https://doi.org/10.1007/s00114-002-0338-7>
- Burnham, K. P., & Anderson, D. R. (2002). *Model selection and multimodel inference : A practical information-theoretic approach* (Second Ed.). Springer.
- 510 Burnham, K. P., & Anderson, D. R. (2004). Multimodel Inference : Understanding AIC and BIC in Model Selection. *Sociological Methods & Research*, *33*(2), 261-304. <https://doi.org/10.1177/0049124104268644>
- Burrill, R. M., & Dietz, A. (1981). The response of honey bees to variations in solar radiation and temperature. *Apidologie*, *12*(4), 319-328. <https://doi.org/10.1051/apido:19810402>
- 515 Cade, B. S. (2015). Model averaging and muddled multimodel inferences. *Ecology*, *96*(9), 2370-2382. <https://doi.org/10.1890/14-1639.1>

- Christensen, R. H. B. (2019). *ordinal—Regression Models for Ordinal Data*. R package version 2019.12-10. <https://CRAN.R-project.org/package=ordinal>
- 520 Coelho, J. R. (1991). Heat Transfer and Body Temperature in Honey Bee (Hymenoptera : Apidae) Drones and Workers. *Environmental Entomology*, 20(6), 1627-1635. <https://doi.org/10.1093/ee/20.6.1627>
- Cohen, J. (1988). *Statistical Power Analysis for the Behavioral Sciences* (Second ed.). Routledge. <https://doi.org/10.4324/9780203771587>
- 525 Cook, D., Tarlinton, B., McGree, J. M., Blackler, A., & Hauxwell, C. (2022). Temperature Sensing and Honey Bee Colony Strength. *Journal of Economic Entomology*, toac034. <https://doi.org/10.1093/jee/toac034>
- Ellis, J. D., Evans, J. D., & Pettis, J. (2010). Colony losses, managed colony population decline, and Colony Collapse Disorder in the United States. *Journal of Apicultural Research*, 49(1), 134-136. <https://doi.org/10.3896/IBRA.1.49.1.30>
- 530 Esch, H., & Bastian, J. (1968). Mechanical and electrical activity in the indirect flight muscles of the honey bee. *Zeitschrift Für Vergleichende Physiologie*, 58(4), 429-440. <https://doi.org/10.1007/BF00343515>
- Esch, H., Goller, F., & Heinrich, B. (1991). How do bees shiver? *The Science of Nature*, 78(7), 325-328. <https://doi.org/10.1007/BF01221422>
- 535 Fukuda, H., & Sakagami, S. F. (1968). Worker brood survival in honeybees. *Population Ecology*, 10(1), 31-39. <https://doi.org/10.1007/BF02514731>
- Graham, S., Myerscough, M. R., Jones, J. C., & Oldroyd, B. P. (2006). Modelling the role of intracolony genetic diversity on regulation of brood temperature in honey bee (*Apis*

- mellifera L.) colonies. *Insectes Sociaux*, 53(2), 226-232. <https://doi.org/10.1007/s00040-005-0862-5>
- 540
- Groh, C., Tautz, J., & Rössler, W. (2004). Synaptic organization in the adult honey bee brain is influenced by brood-temperature control during pupal development. *Proceedings of the National Academy of Sciences of the United States of America*, 101(12), 4268-4273. <https://doi.org/10.1073/pnas.0400773101>
- 545 Heinrich, B. (1980). Mechanisms of Body-Temperature Regulation in Honeybees, *Apis Mellifera* : II. Regulation of Thoracic Temperature at High Air Temperatures. *Journal of Experimental Biology*, 85(1), 73-87. <https://doi.org/10.1242/jeb.85.1.73>
- Heinrich, B. (1985). The social physiology of temperature regulation in honeybees. In B. Holldobler & M. Lindauer (Éds.), *Experimental behavioral ecology and sociobiology* (p. 393-406). Sinauer Associates.
- 550
- Heinrich, B. (1993). *The Hot-Blooded Insects : Strategies and Mechanisms of Thermoregulation*. Springer.
- Heinrich, B., & Esch, H. (1994). Thermoregulation in Bees. *American Scientist*, 82(2), 164-170.
- Hernandez, J., Maisonnasse, A., Cousin, M., Beri, C., Le Quintrec, C., Bouetard, A., Castex, D., 555 Decante, D., Servel, E., Buchwalder, G., Brunet, F., Feschet-Destrella, E., de Bellescize, K., Kairo, G., Frontero, L., Pédehontaa-Hiaa, M., Buisson, R., Pouderoux, T., Aebi, A., & Kretzschmar, A. (2020). ColEval : Honeybee COLony Structure EVALuation for Field Surveys. *Insects*, 11(1), Art. 1. <https://doi.org/10.3390/insects11010041>
- Himmer, A. (1932). Die Temperaturverhältnisse bei den sozialen Hymenopteren. *Biological 560 Reviews*, 7(3), 224-253. <https://doi.org/10.1111/j.1469-185X.1962.tb01042.x>

- 565 Jones, J. C., Helliwell, P., Beekman, M., Maleszka, R., & Oldroyd, B. P. (2005). The effects of rearing temperature on developmental stability and learning and memory in the honey bee, *Apis mellifera*. *Journal of Comparative Physiology. A, Neuroethology, Sensory, Neural, and Behavioral Physiology*, *191*(12), 1121-1129. <https://doi.org/10.1007/s00359-005-0035-z>
- Jones, J. C., Myerscough, M. R., Graham, S., & Oldroyd, B. P. (2004). Honey Bee Nest Thermoregulation: Diversity Promotes Stability. *Science*, *305*(5682), 402-404. <https://doi.org/10.1126/science.1096340>
- 570 Jones, J. C., & Oldroyd, B. P. (2006). Nest Thermoregulation in Social Insects. In *Advances in Insect Physiology* (Vol. 33, p. 153-191). Elsevier. [https://doi.org/10.1016/S0065-2806\(06\)33003-2](https://doi.org/10.1016/S0065-2806(06)33003-2)
- Kassambara, A. (2021). *rstatix: Pipe-Friendly Framework for Basic Statistical Tests*. R package version 0.7.0. <https://CRAN.R-project.org/package=rstatix>
- 575 Kleinhenz, M., Bujok, B., Fuchs, S., & Tautz, J. (2003). Hot bees in empty broodnest cells: Heating from within. *Journal of Experimental Biology*, *206*(23), 4217-4231. <https://doi.org/10.1242/jeb.00680>
- Koeniger, N. (1978). Das Wärmeregulation der Brut bei der Honigbiene (*Apis mellifera* L.). *Apidologie*, *9*(4), 305-320. <https://doi.org/10.1051/apido:19780404>
- 580 Kovac, H., Käfer, H., Stabentheiner, A., & Costa, C. (2014). Metabolism and upper thermal limits of *Apis mellifera carnica* and *A. m. Ligustica*. *Apidologie*, *45*(6), 664-677. <https://doi.org/10.1007/s13592-014-0284-3>
- Kronenberg, F., & Heller, H. C. (1982). Colonial thermoregulation in honey bees (*Apis mellifera*). *Journal of Comparative Physiology*, *148*(1), 65-76. <https://doi.org/10.1007/BF00688889>

- Lindauer, M. (1955). The Water Economy and Temperature Regulation of the Honeybee Colony.
585 *Bee World*, 36(5), 81-92. <https://doi.org/10.1080/0005772X.1955.11094876>
- López-Urbe, M. M., Ricigliano, V. A., & Simone-Finstrom, M. (2020). Defining Pollinator Health : A Holistic Approach Based on Ecological, Genetic, and Physiological Factors. *Annual Review of Animal Biosciences*, 8(1), 269-294. <https://doi.org/10.1146/annurev-animal-020518-115045>
- 590 Marchal, P., Buatois, A., Kraus, S., Klein, S., Gomez-Moracho, T., & Lihoreau, M. (2020). Automated monitoring of bee behaviour using connected hives : Towards a computational apidology. *Apidologie*, 51(3), 356-368. <https://doi.org/10.1007/s13592-019-00714-8>
- Meikle, W. G., & Holst, N. (2015). Application of continuous monitoring of honeybee colonies. *Apidologie*, 46(1), 10-22. <https://doi.org/10.1007/s13592-014-0298-x>
- 595 Meikle, W. G., Weiss, M., Maes, P. W., Fitz, W., Snyder, L. A., Sheehan, T., Mott, B. M., & Anderson, K. E. (2017). Internal hive temperature as a means of monitoring honey bee colony health in a migratory beekeeping operation before and during winter. *Apidologie*, 48(5), 666-680. <https://doi.org/10.1007/s13592-017-0512-8>
- Meikle, W. G., Weiss, M., & Stilwell, A. R. (2016). Monitoring colony phenology using within-
600 day variability in continuous weight and temperature of honey bee hives. *Apidologie*, 47(1), 1-14. <https://doi.org/10.1007/s13592-015-0370-1>
- Neumann, P., & Carreck, N. L. (2010). Honey bee colony losses. *Journal of Apicultural Research*, 49(1), 1-6. <https://doi.org/10.3896/IBRA.1.49.1.01>
- Potts, S. G., Roberts, S. P. M., Dean, R., Marris, G., Brown, M. A., Jones, R., Neumann, P., &
605 Settele, J. (2010). Declines of managed honey bees and beekeepers in Europe. *Journal of Apicultural Research*, 49(1), 15-22. <https://doi.org/10.3896/IBRA.1.49.1.02>

Prange, H. D. (1996). Evaporative cooling in insects. *Journal of Insect Physiology*, 42(5), 493-499.
[https://doi.org/10.1016/0022-1910\(95\)00126-3](https://doi.org/10.1016/0022-1910(95)00126-3)

610 R Core Team. (2021). *R: A language and environment for statistical computing*. R Foundation for
Statistical Computing, Vienna, Austria. <https://www.R-project.org/>

Schmickl, T., & Crailsheim, K. (2004). Inner nest homeostasis in a changing environment with
special emphasis on honey bee brood nursing and pollen supply. *Apidologie*, 35(3),
249-263. <https://doi.org/10.1051/apido:2004019>

615 Seeley, T. D. (1985). *Honeybee ecology : A study of adaptation in social life*. Princeton University
Press.

Seeley, T. D., & Heinrich, B. (1981). Regulation of temperature in the nests of social insects. In
B. Heinrich (Éd.), *Insect thermoregulation* (p. 160-234). Wiley.

620 Siegel, A. J., Hui, J., Johnson, R. N., & Starks, P. T. (2005). Honey bee workers as mobile
insulating units. *Insectes Sociaux*, 52(3), 242-246. <https://doi.org/10.1007/s00040-005-0805-1>

Southwick, E. E. (1985). Allometric relations, metabolism and heart conductance in clusters of
honey bees at cool temperatures. *Journal of Comparative Physiology B*, 156(1), 143-149.
<https://doi.org/10.1007/BF00692937>

625 Stabentheiner, A., Kovac, H., & Brodschneider, R. (2010). Honeybee Colony Thermoregulation –
Regulatory Mechanisms and Contribution of Individuals in Dependence on Age, Location
and Thermal Stress. *PLOS ONE*, 5(1), e8967.
<https://doi.org/10.1371/journal.pone.0008967>

- Stabentheiner, A., Kovac, H., Mandl, M., & Käfer, H. (2021). Coping with the cold and fighting the heat: Thermal homeostasis of a superorganism, the honeybee colony. *Journal of Comparative Physiology A*, 207(3), 337-351. <https://doi.org/10.1007/s00359-021-01464-8>
- 630
- Starks, P. T., & Gilley, D. C. (1999). Heat Shielding: A Novel Method of Colonial Thermoregulation in Honey Bees. *Naturwissenschaften*, 86(9), 438-440. <https://doi.org/10.1007/s001140050648>
- Starks, P. T., Johnson, R. N., Siegel, A. J., & Decelle, M. M. (2005). Heat shielding: A task for
- 635
- youngsters. *Behavioral Ecology*, 16(1), 128-132. <https://doi.org/10.1093/beheco/arh124>
- Tautz, J., Maier, S., Groh, C., Rössler, W., & Brockmann, A. (2003). Behavioral performance in adult honey bees is influenced by the temperature experienced during their pupal development. *Proceedings of the National Academy of Sciences*, 100(12), 7343-7347. <https://doi.org/10.1073/pnas.1232346100>
- 640
- Theraulaz, G., Bonabeau, E., & Deneubourg, J.-N. (1998). Response threshold reinforcements and division of labour in insect societies. *Proceedings of the Royal Society of London. Series B: Biological Sciences*, 265(1393), 327-332. <https://doi.org/10.1098/rspb.1998.0299>
- Ulrich, Y., Saragosti, J., Tokita, C. K., Tarnita, C. E., & Kronauer, D. J. C. (2018). Fitness benefits and emergent division of labour at the onset of group living. *Nature*, 560(7720), 635-638. <https://doi.org/10.1038/s41586-018-0422-6>
- 645
- Vicens, N., & Bosch, J. (2000). Weather-Dependent Pollinator Activity in an Apple Orchard, with Special Reference to *Osmia cornuta* and *Apis mellifera* (Hymenoptera: Megachilidae and Apidae). *Environmental Entomology*, 29(3), 413-420. <https://doi.org/10.1603/0046-225X-29.3.413>

650 Wang, Q., Xu, X., Zhu, X., Chen, L., Zhou, S., Huang, Z. Y., & Zhou, B. (2016). Low-Temperature
Stress during Capped Brood Stage Increases Pupal Mortality, Misorientation and Adult
Mortality in Honey Bees. *PLOS ONE*, *11*(5), e0154547.
<https://doi.org/10.1371/journal.pone.0154547>

Weidenmüller, A. (2004). The control of nest climate in bumblebee (*Bombus terrestris*) colonies :
655 Interindividual variability and self reinforcement in fanning response. *Behavioral Ecology*,
15(1), 120-128. <https://doi.org/10.1093/beheco/arg101>

Winston, M. L. (1987). *The Biology of the Honey Bee*. Harvard University Press.

Zacepins, A., Meitalovs, J., Komasilovs, V., & Stalidzans, E. (2011). Temperature sensor network
for prediction of possible start of brood rearing by indoor wintered honey bees. *12th*
660 *International Carpathian Control Conference (ICCC)*.
<https://doi.org/10.1109/CARPATHIANCC.2011.5945901>

Zacepins, A., Stalidzans, E., & Meitalovs, J. (2012). *Application of information technologies in
precision apiculture*.

665 **Acknowledgements**

This project received funding from France Agrimer (ToolBee, 17-03-R) (MP, CR, DC, MH, YLC, CA). U. Godeau was supported by the European Horizon 2020 research and innovation program under grant agreement no. 817622 (B-GOOD). We are extremely grateful to Hervé Mugnier, Jean-Camille Lebreton, Aurelien Neveux and Sully Vitry for their technical assistance with the hive sensors. We also thank Christopher Mayack and Jakob Wegener for comments that greatly improved the manuscript.

670